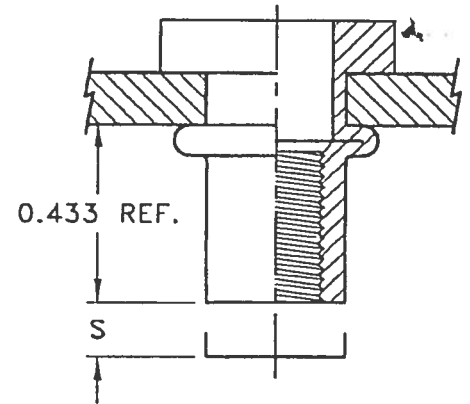
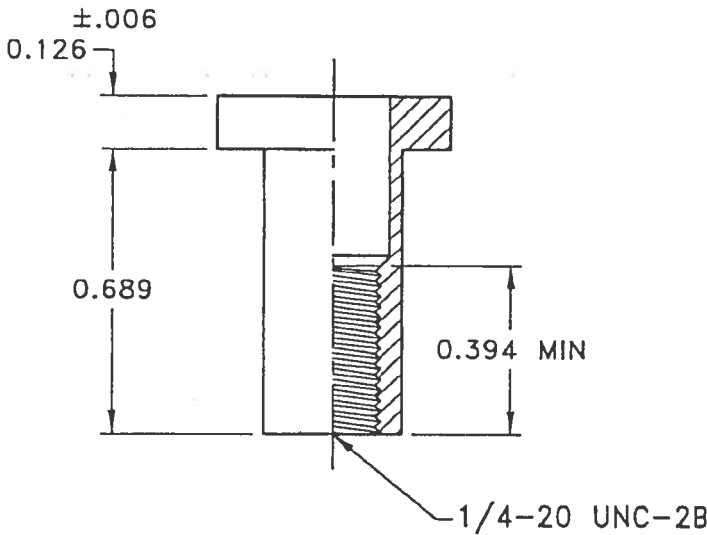
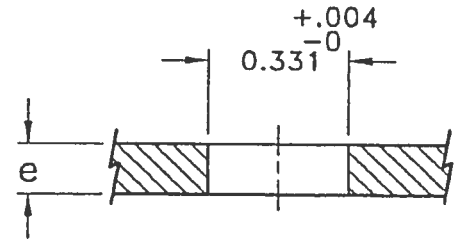
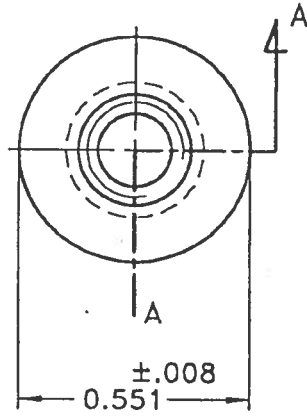


THE DRAWING AND THE INFORMATION THEREON ARE THE PROPERTY OF BOLLHOFF RIVNUT® INC. REPRODUCTION OR DISCLOSURE OF ANY PART OF THIS DRAWING OR THE INFORMATION THEREON AND/OR THE USE THEREOF FOR OTHER DRAWINGS OR FOR ANY APPARATUS THEREON ARE PROHIBITED WITHOUT THE WRITTEN CONSENT OF BOLLHOFF RIVNUT® INC. RESERVES THE RIGHT TO MODIFY THIS DRAWING AS NEEDED WITHOUT PRIOR NOTIFICATION.



SECTION A-A

NOTES:

- 1) DIMENSIONS SHOWN IN INCHES.
- 2) GRIP RANGE e: .110 - .126
- 3) STROKE S: .256 - e
- 4) MAX SETTING LOAD (LB): 900
- 5) MAX TORQUE ON THE SCREW (IN LB): 53
- 6) MAX PROOFLoad (LB): 1800

REVISIONS					Bollhoff Rivnut® Inc.	
SYM	ECN NO.	DESCRIPTION	BY	APP	FASTENING & ASSEMBLY TECHNOLOGY	
-	3464	NEW DRAWING RELEASE	D.D.M. 8/20/03	J.C.X. 8/20/03	2705 Marion Drive Kendallville, Indiana USA 46755 PH(260)347-3903 FAX(260)347-3926	
A	3478	CHANGED PART NUMBER.	D.D.M. 8/28/03	B.S.H. 8/28/03		
					TITLE: RIVKLE UNC 1/4 SPECIAL	
					PART NUMBER 23390746501	
DRAWN BY: D.NEAL		DATE: 8/20/03	PAGE: 1 of 1	MATERIAL: 5052-ALUMINUM		
CHECKED: J.KABOT		SCALE: NONE	SURFACE TREATMENT:			
APPROVED: J.KABOT		CAD FILE: C2R3420.DWG	DRAWING NUMBER: C2R3420 Type REV 02 A			

